

# ECOLOGY: The Study of the Place We Live

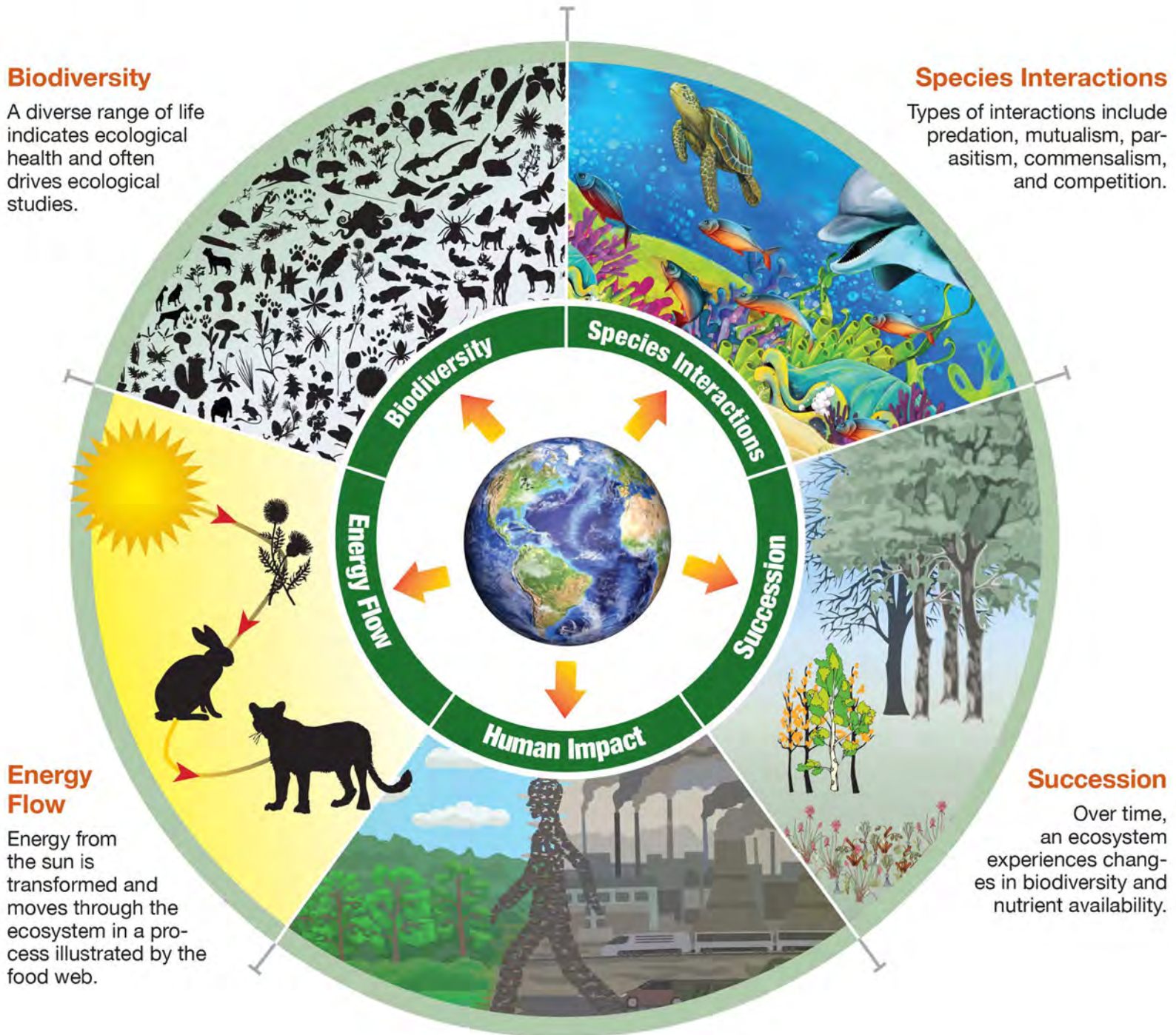
Ecology examines the relationships between the living and non-living at scales ranging from the individual organism to the biosphere.

## Biodiversity

A diverse range of life indicates ecological health and often drives ecological studies.

## Species Interactions

Types of interactions include predation, mutualism, parasitism, commensalism, and competition.



## Energy Flow

Energy from the sun is transformed and moves through the ecosystem in a process illustrated by the food web.

## Succession

Over time, an ecosystem experiences changes in biodiversity and nutrient availability.

## Human Impact

Through construction, agriculture, and pollution, humans make a significant impact on the ecosystem. Modern ecologists focus on measuring this impact.